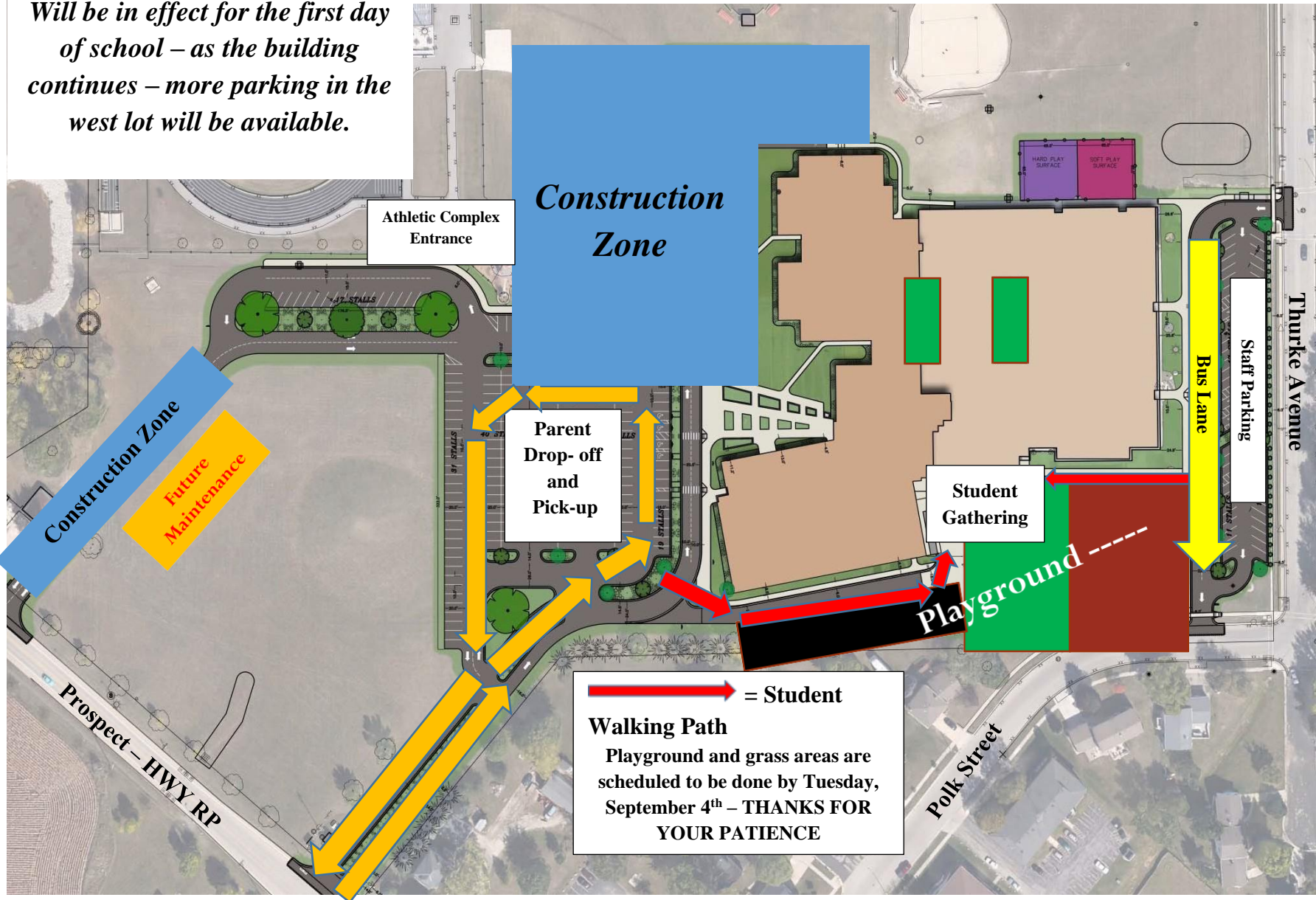


# Begins

Monday, August 20<sup>th</sup>!

*Will be in effect for the first day of school – as the building continues – more parking in the west lot will be available.*

# Friendship Learning Center Traffic and Student Movement Plan



**→ = Student Walking Path**  
Playground and grass areas are scheduled to be done by Tuesday, September 4<sup>th</sup> - THANKS FOR YOUR PATIENCE